

The Capital Stamp Show 2015

Celebrating 150 years of Government in Wellington

23-25 October 2015, TSB Bank Arena, Wellington
PO Box 2146, Wellington 6140, New Zealand



**New Zealand National Stamp Exhibition incorporating
a Nations Challenge & 14th National Philatelic Literature Exhibition**

Proudly sponsored by

New Zealand Post



Supported by



BULLETIN Number 3 – August 2015

1 Welcome

Welcome to the third Bulletin for The Capital Stamp Show 2015. While this is the last bulletin planned please keep an eye on our website at www.nzpf.org.nz/exhibitions/capital-stamp-show-2015 where you will find updates of information as we near the exhibition.

If you want to be kept personally informed on updates on matters relating to the show please register your interest on the website at:

<http://www.nzpf.org.nz/the-capital-stamp-show-registration-of-interest/>

In this bulletin we provide details of the exhibits you can expect to see; the range of activities to be held during and immediately after the show; information relating to the special product and postmarks available from the NZ Post stand; dealers who will be present with trade stands; and, we announce the third CAL issue and related material.

We also provide some further hints and updates regarding accommodation and transport and provide a range of other information.

2 Exhibits

2.1 Sending exhibits to the show

Exhibitors will be receiving envelopes for their exhibits shortly. Please follow the instructions on the envelope and forward your completed entry:

- to your commissioner (for Australia, Canada, China, Thailand and United States) by the date they have specified; or
- if sending within New Zealand by courier to The Capital Stamp Show 2015, c/- Jan McDonald, Mowbray Collectables, 247-253 State Highway 1, North Otaki 5581 so they arrive no later than 20 October; or
- if delivering by hand, to the TSB Bank Arena no later than 10:00am, 22 October 2015.



Frequent Public Auctions
Over 1500 Lots per Auction
Wide Range of Philatelic items
Extensive and Friendly Website
Viewing and Bidding Online
Excellent Vendor Terms

**We are always seeking suitable material
to be offered in our Public Auctions.**

**Contact us to discuss how our superior service
can help you achieve the best results with your consignment.**

**To request a copy of our catalogue,
contact us on Ph: 613 8682 9876
or email: phoenix@phoenixauctions.com.au**

PhoenixAuctions.com.au



**Phoenix Auctions Pty Ltd · Auction Rooms: Level 2, 170 Queen Street, Melbourne, Australia.
Postal Address: GPO Box 4346, Melbourne, Vic. 3001, Australia. · ABN: 92 132 987 683
P: +61 3 8682 9876 · F: +61 3 8677 2858 · E: phoenix@phoenixauctions.com.au**

2.2 National Stamp Exhibition

When entries closed on 25 July we had received over 130 entries comprised of over 530 frames of competitive exhibits all of which have been accepted. These have been entered in a wide spectrum of exhibiting classes. In addition we have 26 frames of invited displays and 12 frames of special displays. All of these will ensure you have an opportunity to see a truly broad range of material; gain ideas for your own collections and exhibits; and, maybe, they could suggest some other avenues for you to pursue.

2.3 Nations Challenge

As previously indicated, the entries in the Nations Challenge will see some spectacular material never before seen in New Zealand. A number of the entries have achieved International Large Golds. Even though some will cover subjects unlikely to otherwise be shown in NZ there will also be exhibits whose subjects are familiar but the coverage and approach could be significantly different.

We are very grateful to the countries sending material for this challenge and also other exhibits. In particular we thank the following commissioners for their support:

Australia	David Benson
Canada	Charles J G Verge
China	Mm Jiao Xiaoguang
Thailand	Pichai Buranasombati
United States	Danforth Walker.

2.3 Literature Exhibition

The entries for this exhibition have closed and the literature judges are assessing the entries. We received over 40 entries of books, catalogues, newsletters and other printed material as well as a number of electronic newsletters and websites. All of these will be available to peruse in a special 'reading area' set aside within the show venue. This could be a great place to sit down for a while in between viewing the exhibits and dealers to read through the material on display.

2.4 Sessions with the jury for exhibitors

As is normally the practice the jury will meet with exhibitors who wish to hear comments from the jury about their exhibits. This will take place on the morning of Sunday 25 October.

The Jury Chairman will present an overview and team leaders for the different disciplines will make general comments. A jury member will hold one-on-one discussions at the frame with the individual exhibitor afterwards.

This is a great way to learn more about improving your exhibit and, as many of the jurors will be qualified international judges and very experienced, an opportunity that otherwise might only come at an international exhibition.

3 Events and activities

3.1 Youth court

The Philatelic Youth Council of NZ (PYC) will be providing an area with a range of activities for young people.

3.2 Awards dinner - Palmares

The awards dinner is to be held on Saturday 24 October, arrival at 6:30pm for a 7:15pm start. It is to be held at the Dockside Restaurant & Bar, Queens Wharf which is located a short walk from the exhibition venue.

Entry is by ticket only. Ticket numbers are strictly limited and are sold on a first-come, first-served basis. So be in quick!

**SPECIALIST INSURANCE
FOR DEALERS AND COLLECTORS
OF PHILATELIC & NUMISMATIC MATERIAL**

Through H W Wood Australia Pty Ltd

Insurance Brokers

A member of the HW International Group

**Comprehensive Cover for Competitive Premiums
Worldwide Facility with clients in 45 countries**

H W Wood has over 30 years experience in providing specialist insurance for stamp and coin dealers, collectors and auctioneers



A product disclosure statement can be obtained from our office.

Please contact: Melissa Proven
H W Wood Australia Pty Ltd Tel: 61 (0)3 9819 9122
617 Glenferrie Road Fax: 61 (0)3 9819 9430
Hawthorn Vic 3122 Email: MProven@hwint.com.au

AFS Licence No. 230009

***London, New York, Philadelphia, Toronto, Paris,
Cologne, Madrid, Rotterdam, Athens and affiliates
throughout the World.***

Proudly supporting the Philatelic Community

The price is NZ\$80.00 and you may purchase your ticket using the Order form enclosed.

Tickets will be available at the entry desk to be picked up on Friday 23 or Saturday 24 October. If there are any tickets remaining unsold they will be sold at the entry desk on Friday 23 ONLY.

3.3 Society and other meetings

The venue has a number of meeting rooms that will be available for meetings at no charge. These rooms cater for meetings of up to fifty people or small rooms which would be comfortable for much smaller groups.

The organising committee would like to cater for all such meetings but would appreciate you contacting us as soon as you can with possible numbers of attendees and any special furniture or equipment needs. This will allow us to plan best use of the rooms, ensure the meetings are listed in future publicity, the show catalogue and provide clear directions at the venue. Please advise capital2015@gibsonz.com

Meetings have so far been booked for the Royal Philatelic Society of NZ, Thematic Association of NZ, Association of NZ Philatelic Judges and the Perfin Club of NZ & Australia.

3.4 Robert Samuel Memorial Lectures 2015

Special meeting of the Wellington Philatelic Society – Monday 26 October

Dorset Suite, First Level, West Plaza Hotel, 110 Wakefield Street, Wellington from 9:00am to 3:30pm.

Monday the 26 October is Labour Day, a New Zealand public holiday. The Wellington Philatelic Society (WPS), host society for the exhibition, has arranged a special meeting on Monday following the exhibition where several notable overseas philatelists will speak. In association with the Christchurch Philatelic Foundation (the Foundation) these presentations will be called the Robert Samuel Memorial Lectures 2015.



Christchurch
Philatelic Foundation

Robert Samuel was a very prominent Christchurch philatelist who was a successful international philatelic exhibitor and judge, a society administrator, respected author and commentator. The Foundation administers a fund set up in Robert's memory which assists in the presentation of philatelic lectures provided by visiting overseas philatelists. This clearly is the case here and WPS is very grateful for the Foundation's support.

The programme will include a brief welcome from the society President and the Foundation to be followed by three periods, each with two speakers. Breaks will occur for morning tea and at midday for lunch. Confirmed speakers are Andrew Dove of England, Bernie Beston and Gary Brown of Australia and Dan Walker of the United States. Final confirmation of the other two speakers is expected shortly and the full programme including the subjects that will be presented will be posted on our website as soon as possible.

Entry will be by ticket only. Ticket numbers are strictly limited and are sold on a first-come, first-served basis. So be in quick!

The price is NZ\$25.00 and you may purchase your ticket using the Order form enclosed.

Tickets will be available at the entry desk to be picked up on Friday 23, Saturday 24 or Sunday 25 October. If there are any tickets remaining unsold they will be available at the entry desk on Friday 23 and Saturday 24 ONLY.

If you want to be kept personally informed on updates for this event or any other relating to the show please register your interest on the website at <http://www.nzpf.org.nz/the-capital-stamp-show-registration-of-interest/>

When planning your visit to Wellington do make provision for staying the extra day to allow you to attend this function.

4 NZ Post

NZ Post is our major sponsor we are pleased to acknowledge their support for the show. They will be having a stand at the show selling their current range of philatelic and numismatic products and postmarking material on request.

As the show is a five minute walk away from NZ Post head office we are expecting a number of their staff to attend for brief sessions at the show so they can experience a philatelic exhibition. This will be a great opportunity to meet many of the people in their Stamps and Coins section.

4.1 Special miniature sheet for show

As with previous national philatelic exhibitions, NZ Post is going to produce a special miniature sheet. You can expect publicity relating to this sheet and of The Capital Stamp Show 2015 to be released by NZ Post Stamps and Coins in the very near future.

4.2 Show postmarks

NZ Post has prepared four postmarks for the show. They all have a common theme relating to the buildings used by Parliament in the 150 years it has been in Wellington.

One will be used for the special miniature sheet first day cover distributed from Whanganui to their regular customers and available at the show at their stand. This postmark will feature the Parliamentary Library, completed in 1899, which is the oldest building in Parliament Grounds, earlier buildings having burnt in a fire in 1907. From its steps the declaration of war was read in 1914.



Please note final images may differ slightly from those shown.

The three postmarks to be used during the show – one for each day – are depicted above. These feature the first building used by parliament in Wellington in 1865 (Friday 23 October), Parliament House used from 1918 (Saturday 24 October) and the Beehive used from 1977 (Sunday 25 October).

For those with a good eye and memory of past stamp issues will recognise these images from the 2004 stamp issue from NZ Post celebrating 150 years of Government in New Zealand. The Beehive image is, of course, the logo for The Capital Stamp Show 2015.

5 Dealers

Our other major supporter is the NZ Stamp Dealers' Association. Their assistance and that of their members in organising and funding the show and, of course, their presence at stands at the show is greatly appreciated. There will be sixteen dealers with stands and they will be selling, buying, offering advice and providing other services. These dealers are as follows, in no particular order:

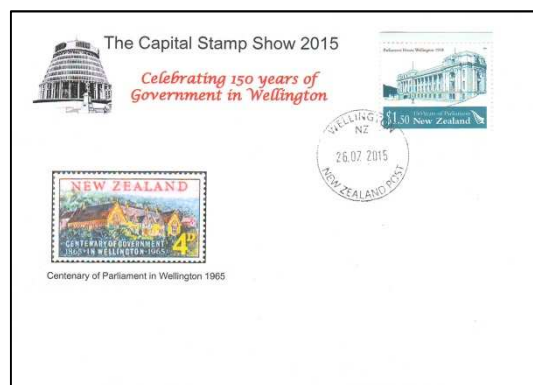
- AG & GM Visini
- Val Palenski
- Bill Leggett Collectables
- Eccles Stamps
- Kadine Stamps
- Nustamps
- William Carson
- Philatelic Distributors Ltd
- John & Jan Fitzpatrick
- Alan Craig
- Auckland City Stamps
- Campbell Paterson
- Mowbray Collectables
- Ashford Stamps
- Classic Stamps
- Ian Perry (United Kingdom)

6 Products

6.1 Commemorative cover

On 26 July 1865 Parliament first sat in Wellington having moved from Auckland. This was a significant event for Wellington and has shaped its history ever since. A limited edition philatelic cover was prepared celebrating this event and was postmarked on Sunday 26 July 2015.

The cachet has the letterhead of The Capital Stamp Show 2015 and its slogan 'Celebrating 150 years of Government in Wellington' with the Beehive and an image of the 1965 4d stamp issued celebrating the centenary of Wellington as the capital city. The stamp bears the image of Parliament House 1918 and is the \$1.50 (150 cent) value from the 2004 issue commemorating 150 years of New Zealand Parliament.



This item can be obtained for NZ\$5.00, as long as the limited stocks last, by completing the enclosed order form.

6.2 CALs series III and related product

The third issue of CALs was released on 28 August 2015.

Victoria

In 1865 Queen Victoria had been on the throne for 27 years. The 'Full-face Queen' had been first issued ten years earlier and in subsequent years were printed and perforated, in a number of different locations. Prior to the shift of Parliament from Auckland in 1865 the Government Printer had relocated to Wellington and all perforations from then and printing of new issues of the stamps took place at their Wellington premises.



On 1 June 1865 a new 4d value was issued but after a short print run the colour was changed from rose to yellow. It is the vignette of this yellow stamp used in the CAL.

The bronze monument to Queen Victoria, shown on the maximum card was Wellington's first significant sculpture and was planned after Victoria's death on 1901. Sculpted by noted British sculptor, Alfred Drury this Queen Victoria is regarded as a particularly fine example of high imperial statuary.

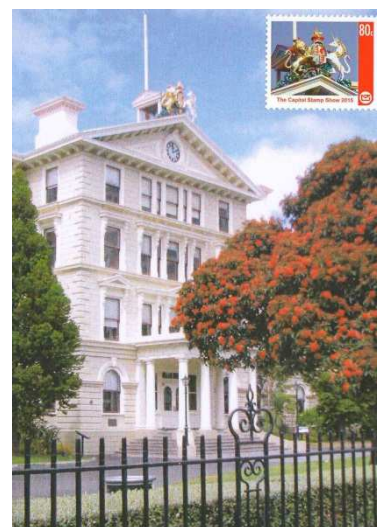
It was unveiled in April 1905 by NZ's governor, Sir William Plunket at its original location in Post Office Square immediately over Jervois Quay from where the TSB Bank Arena, the venue for the Capital Stamp Show 2015, is now located. However, in 1911 the statue had to be moved. Trams had arrived and Post Office Square was a central point in the tram system. The statue was relocated to its current site between Kent and Cambridge Terraces.



Coat of Arms and Old Government Building

When it opened in 1876, after 22 months of construction, the Old Government Building was easily the largest building in the country and the second largest building made of wood in the world. It was an important symbol of nationhood being completed in the same month provincial government in NZ ended and central government asserted its authority. The building, made from native kauri, was designed to mimic stone.

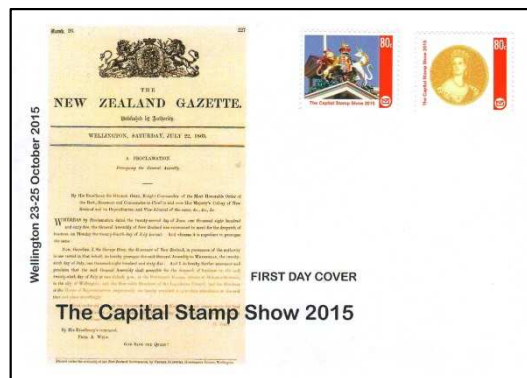
The building initially housed the entire Wellington-based civil service as well as the entire Cabinet. In addition, the Executive Council met there until 1948. The civil service rapidly expanded beyond the capacity of the building, with the first department leaving shortly after it was opened. By 1990 the last, the Education Department, left and the building was empty. After housing government departments for 114 years, Government



funding was made available and restoration began in 1994. The project spanned two years and among the items that were restored or preserved was the coat of arms depicted in the CAL. The building, formally reopened Jan 1996, is now occupied by the Victoria University Law Faculty.

First day cover

The first day cover links the two CALs and the celebration of 150 years of Government in Wellington. The cachet reproduces the special edition on Saturday 22 July 1865 of *The New Zealand Gazette* containing the official proclamation from the Governor General, Sir George Grey proroguing the General Assembly to Wednesday 26 July 1865 for the despatch of business at Parliament House, Molesworth Street in Wellington. Headed with the British coat of arms the proclamation closes with the salutation 'God Save the Queen!'



Please note the images are not to scale and the final product may vary slightly from that shown. Postmarks will be applied on the first day of issue 28 August 2015. These items can be purchased by completing the enclosed order form.

6.3 Special overprinted miniature sheets

The organising committee, thanks to NZ Post, has been able to obtain a number of miniature sheets contained in NZ Post's 2015 special edition '1915 The Spirit of Anzac' miniature sheet booklet. They have never been mounted in a booklet and are not available in this format any other way.

Privately overprinted, these miniature sheets will be available **ONLY** at the show. For production reasons, some of the sheets were not available or only in very limited numbers. We are holding some of the rarer ones for auction.

More details of the sheets that will be available and costs will be announced in future, however, a random selection of one of the 80c designs available will be included with purchase of a show catalogue – see below in 6.4. If you want to be kept personally informed on updates please register your interest on the website at <http://www.nzpf.org.nz/the-capital-stamp-show-registration-of-interest/>

6.4 Show catalogues

There will be two show catalogues produced for the show:

- For the literature exhibition which will be available free. This will include details of the entries, the awards they receive and where they may be obtained and their cost. This catalogue will be sent to all New Zealand societies. The items will be available for members of NZPF affiliated societies to borrow, as are all of the entries in the previous thirteen exhibitions. Details of how these may be borrowed will be included in the catalogue.
- For the philatelic exhibition which will be available at a cost of \$5.00. This will include details of all the entries; provide a layout of the venue including dealer stands so you are able to locate the areas you are interested in; and, detail the programme of meetings and other timed events throughout the show.

With every catalogue purchased a random selection of one of the six miniature sheets containing an 80c stamp of the '1915 The Spirit of Anzac' NZ Post issue will be included – see 6.3 above.

7 Opportunities to assist

A number of opportunities are available for individuals to support the exhibition: frame sponsorship, donations of special prizes and volunteering to assist with setting up, during the exhibition and immediately afterwards. Shortly we will be circulating a job sign-up sheet to regional societies for volunteers to indicate their commitment to perform specific roles. For planning and security reasons we need to have identified those people in advance.

If you are interested in being part of this effort please contact the secretary at capital2015@gibsonz.com

8 Accommodation, transport and parking

8.1 Accommodation

The central area of Wellington city has a large number of hotels ranging from economy 'back packers' to international five star. Few have extensive parking and often provide a valet parking service only for which an additional charge may be made.

Our hotel of choice is the West Plaza as it is within walking distance of the venue, is immediately across the road from Wellington's *i*-site and very convenient to a wide range of restaurants and shopping areas.

There is a wide range and number of hotels and motels in suburban Wellington and further afield in the Hutt Valley (Hutt City and Upper Hutt City), Porirua or Kapiti. These could be a worthwhile option where they are close to a railway station or bus route.

You should find what you are looking for at <http://www.wellingtonnz.com/discover/accommodation/>, <http://www.aatravel.co.nz/accommodation-newzealand/>, <http://www.jasons.co.nz/accommodation> or other accommodation search sites and placing Wellington, Porirua, Lower Hutt or Upper Hutt in 'Location'.

8.2 Transport

The Wellington Region prides itself in having the best public transport system in the country. For information about public transport in the Wellington Region check the Metlink site at <http://www.metlink.org.nz/>

Those of you with NZ 'SuperGold Cards' should be aware that in the Wellington Region on week days (Monday to Friday) the use of the card is limited to off-peak (generally 9:00 am to 3:00pm and after 6:30pm) services only. However, the card is available all day on Saturday, Sunday and Public Holidays.

8.3 Parking

On-street parking in Wellington near the venue is highly sought after. Charges apply on Friday (currently \$4/hour) and, while free on Saturday and Sunday, there is generally a maximum stay of two hours applying on all three days of the show and this is strictly enforced.

Parking buildings and parking areas do exist for longer term parking and details can be found on the following sites <http://wellington.govt.nz/services/parking-and-roads/parking>, <http://www.wilsonparking.co.nz/go/regions/wellington-cbd>, <http://www.parkopedia.co.nz/parking/wellington/>

On Saturday and Sunday you may prefer to park-and-ride. Most of the stations on the Hutt and Waikanae lines have plenty of parking available and the trains run at 30 minute intervals through most of each day.

9 Alternative activities for partners/family

Wellington and its surrounding region has a wide range of places to visit and things to do. You will gain a good idea of this if you visit the *i*-sites at Wellington, Lower Hutt, Upper Hutt, Porirua or Paraparaumu – check <http://www.newzealand.com/int/visitor-information-centre/>

10 Exhibition Organising Committee

The Organising Committee is as follows:

Chairman	Stephen Chivers
Secretary	Bob Gibson
Treasurer and Exhibits Officer	Leigh Gravestock
NZ Post representative	Alan Hollows
NZ Stamp Dealers Association representative	David Holmes
Fund raising and sales	Sue Vernal
Hall Manager	Bob Watson
NZ Philatelic Federation coordinator	Mark Benvie
Chairman of Jury	David Loe
Chairman of Jury, Literature Exhibition	Jeff Long

11 Acknowledgements

The organising committee acknowledges the assistance given by Mowbray Collectables in receiving and holding exhibits prior to and, in some cases after, the show so they can be held safe in secure premises.

The Capital Stamp Show 2015 also acknowledges the support provided by:



Hutt Valley Philatelic Society

Royal Philatelic Society of NZ

Upper Hutt Stamp Club

DCR Rentals

New Zealand
Philatelic Trust

Central Districts
Philatelic Trust